

ZPC - EPOXY AND ZINC COATED CAST IRON HUBLESS CAP & REDUCER

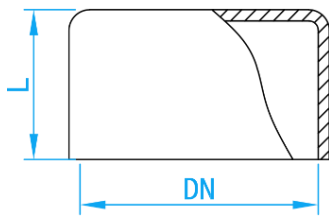


COMPLY WITH BS EN877: 2021
BS EN 598: 2007

COATING CHARACTERISTIC

ITEM	LAYERS	THICKNESS
1	Internal Coating	Min. 250µm
2	A Lay Of Metallic Zinc	130g/m ²
3	External Coating	Average thickness ≥70µm, local minimum thickness not less than 50µm

END CAP

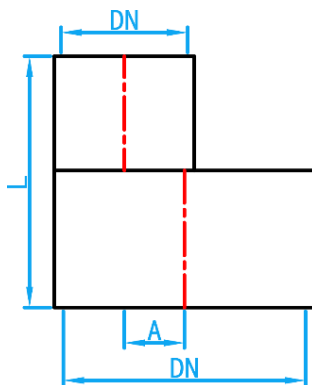


CROSS SECTIONAL VIEW

DIMENSIONS

SKU	DN (mm)	L (mm)	WEIGHT (kg)
HUBZEC050	50	30	0.23
HUBZEC080	75	35	0.50
HUBZEC100	100	40	0.71
HUBZEC150	150	50	1.80
HUBZEC200	200	60	2.80
HUBZEC250	250	70	6.00

REDUCER



SIDE VIEW

DIMENSIONS

SKU	DN (mm)	L (mm)	A (mm)	WEIGHT (kg)
HUBZRS08050	75X50	75	12.5	0.65
HUBZRS10050	100X50	80	25	0.90
HUBZRS10080	100X75	100	13.5	1.07
HUBZRS12550	125X50	85	38.5	1.40
HUBZRS12580	125X75	95	26	1.70
HUBZRS125100	125X100	95	12.5	1.80
HUBZRS150050	150X50	95	51	2.00
HUBZRS150080	150X75	100	37.5	2.10
HUBZRS150100	150X100	150	25	1.96
HUBZRS150125	150X125	110	12.5	2.20
HUBZRS200080	200X75	115	62.5	3.15
HUBZRS200100	200X100	115	50	4.10
HUBZRS200125	200X125	120	37.5	4.20
HUBZRS200150	200X150	125	25	4.30
HUBZRS250100	250X100	130	75	5.83
HUBZRS250150	250X150	140	57	6.80
HUBZRS250200	250X200	145	32	7.00
HUBZRS300150	300X150	150	83	10.70
HUBZRS300200	300X200	160	58	11.40
HUBZRS300250	300X250	170	26	10.00

***Availability upon request**

Notes: The tolerance for Weight is ±10%.